

Distribution Boards - practical solutions for smart electricians



■ Compact user friendly solution, optically optimized by cable entry cover



■ DIN-rails with stopper for proper position of installation device



■ Integrated compartment - everything is always in its place, nothing will be lost

■ One door covers all installation rows

Practical solutions

for cable entry and accessories



■ Cable entry IP 65 with integrated, elastic membranes

■ Cable entry via metric knockouts and cable glands



Securely locked

through closing mechanism and sealing



■ Lockable door via locking device and/or sealable

■ Sealing of top and bottom part

■ Door hinging interchangeable fast and easy from left to right

Modern enclosure

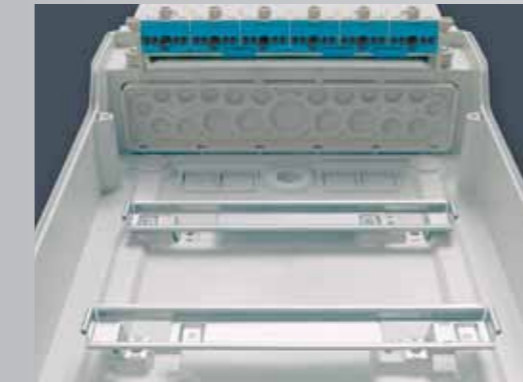
with lots of space for installation and wiring



■ Perfect installation solution for cable trunking

■ Multiple enclosure fixing - also on pillars or narrow components

■ More space for wiring, convenient access to the wiring



■ Variable installation depth through mounting DIN-rails in different levels



■ Included blanking strips

Quick installation

through Fixconnect® plug-in terminal technology



■ FIXCONNECT® terminal technology for PE and N

■ N separable for various potentials via plug-in jumper

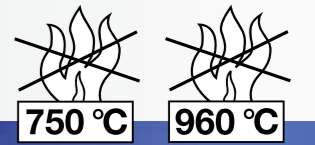
■ Labelling option of terminals

■ Lots of space for identification of electrical circuits

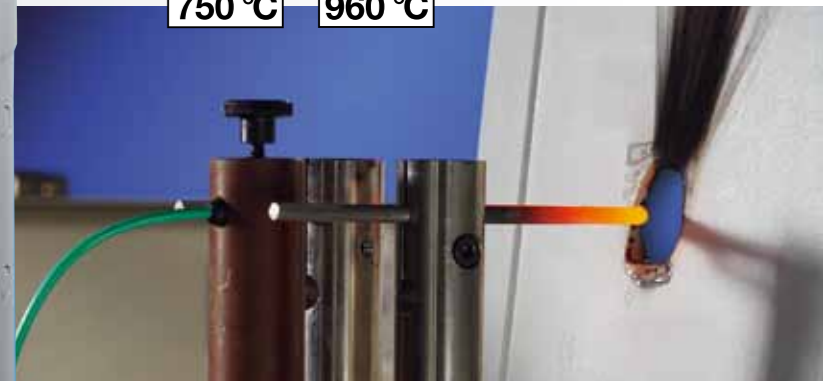
■ Editable template at www.hensel-electric.de

High quality material

for demanding areas of application



■ Flame-retardant, self-extinguishing
Burning behaviour: Glow wire test according to IEC 60 695-2-11

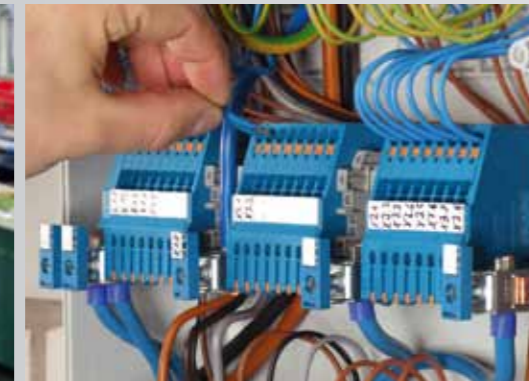
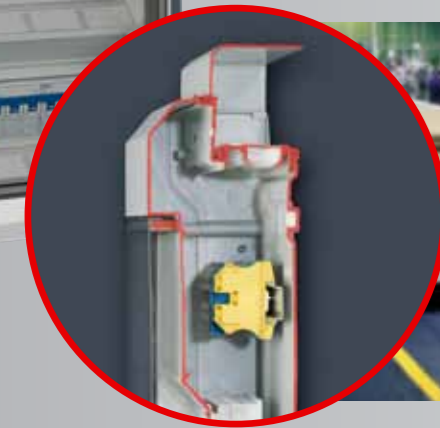




KV Extra

with additional space for electrical devices not to be manually actuated

In the same enclosure standard-conforming installation devices (sizes according to DIN 43880) and non-operator-controlled devices can be installed at the same time.



■ N disconnect terminal the measurement of the insulation resistance in accordance with DIN VDE 0100-718 (German Standard)

KV PC "weatherproof"



for outdoor installation
(harsh environment and/or outdoor)



KV small-type distribution boards "weatherproof" are big in the safe and economical power supply in outdoor installations and in commercial and industrial applications.



PASSION FOR POWER.

Gustav Hensel GmbH & Co. KG
Industrial Electrical Power Distribution Systems

Altenhüdem
Gustav-Hensel-Straße 6
D-57368 Lennestadt
Germany
P.O. Box 1461
D-57344 Lennestadt, Germany

Phone: +49 (0)27 23/6 09-0
Fax: +49 (0)27 23/6 00 52
E-Mail: info@hensel-electric.de
www.hensel-electric.de

Representations abroad

- | | |
|----------------------------|----------------------|
| Africa | Great Britain |
| Angola | Hungary |
| Egypt | Iceland |
| Kenya | Ireland |
| Mozambique | Israel |
| South Africa | Italy |
| | Latvia |
| America | Lithuania |
| USA | Luxembourg |
| | Montenegro |
| | Netherlands |
| Asia | Norway |
| Bangladesh | Poland |
| Bhutan | Portugal |
| Cambodia | Romania |
| Georgia | Russia |
| India | Serbia and |
| Indonesia | Slovakia |
| Japan | Spain |
| Kazakhstan | Sweden |
| Malaysia | Switzerland |
| Maldives | Turkey |
| Myanmar | Ukraine |
| Pakistan | |
| People's Republic of China | Middle East |
| Philippines | United Arab Emirates |
| Singapore | Bahrain |
| Sri Lanka | Iran |
| Taiwan | Kuwait |
| Thailand | Oman |
| | Qatar |
| Europe | Saudi Arabia |
| Austria | |
| Belgium | Oceania |
| Croatia | Australia |
| Czech Republic | New Zealand |
| Estonia | |
| Finland | |
| France | |



www.hensel-electric.de



PASSION FOR POWER.

The Big One among the Little Ones KV Small-type Distribution Boards



More Informationen at www.hensel-electric.de



Range Overview

Circuit Breaker Boxes



KV small-type distribution boards are big in the safe and economical power supply in buildings and commercial and industrial applications. Close to working places. Safe through using highest material quality. Conforming to standards with Hensel expertise.

- Small-type distribution board up to IP 65
- For DIN-rail mounted devices up to 63 A according to DIN 43 880
- Operation and access by unskilled persons.
- In accordance with DIN EN 60 670-24



	IP 54	IP 65	IP 65 KV metric	IP 65 KV Extra	IP 65 KV Extra with N disconnect terminal	IP 65 „weatherproof“
Modules (1 mod = 18 mm)						
3 modules 1-row 3 mods each	KV 1503	KV 9103				KV PC 9103
4.5 modules 1-row 4.5 mods each	KV 1504	KV 9104				KV PC 9104
6 modules 1-row 6 mods each	KV 1506	KV 9106				KV PC 9106
9 modules 1-row 9 mods each	KV 1509	KV 9109				KV PC 9109
12 modules 1-row 12 mods each	KV 1512	KV 9112	KV 9112 M	KV 9220	KV 9220 N	KV PC 9112
18 modules 1-row 18 mods each	KV 1518	KV 9118	KV 9118 M	KV 9230	KV 9230 N	
24 modules 2-row 12 mods each	KV 2524	KV 9224	KV 9224 M	KV 9330	KV 9330 N	KV PC 9224
36 modules 2-row 18 mods each	KV 2536	KV 9236	KV 9236 M	KV 9350	KV 9350 N	
36 modules 3-row 12 mods each	KV 3536	KV 9336	KV 9336 M	KV 9440	KV 9440 N	KV PC 9336
48 modules 4-row 12 mods each	KV 4548	KV 9448	KV 9448 M			KV PC 9448
54 modules 3-row 18 mods each	KV 3554	KV 9354	KV 9354 M			

ENYBOARD