



Dear reader,

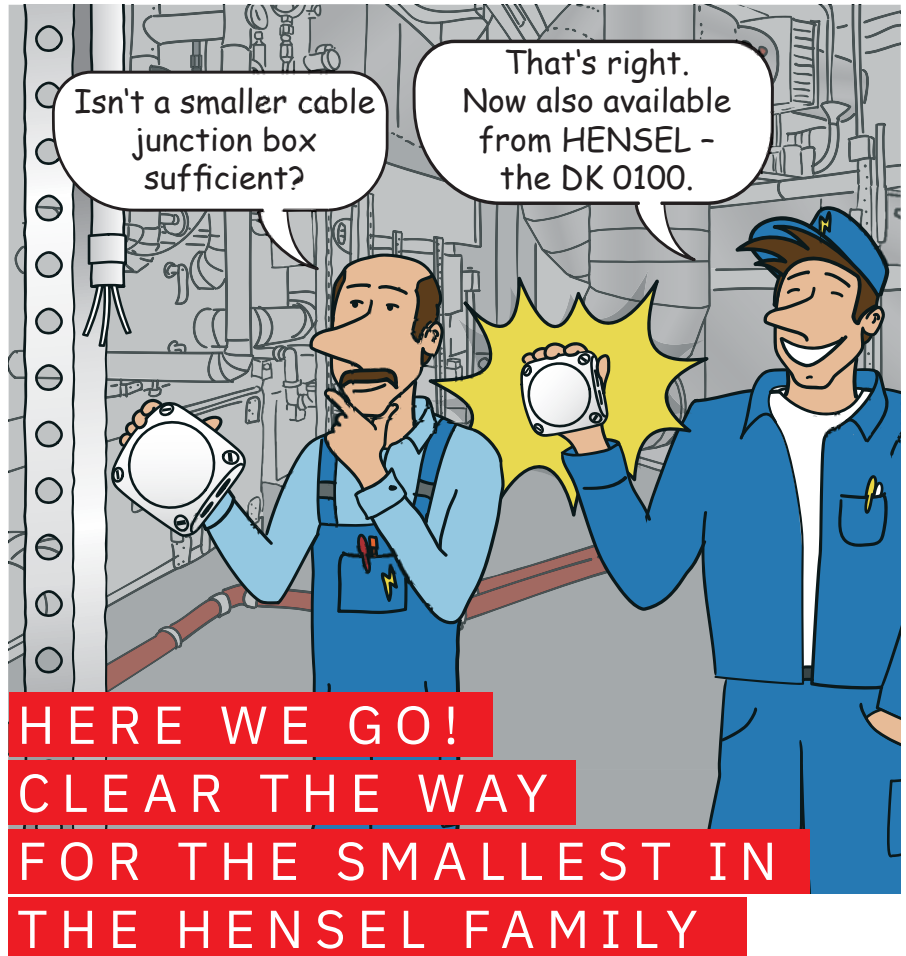
We are already the 3rd generation of our family to work passionately for the safe distribution of electrical energy. It starts on a small scale - with the cable junction box. In 1931, my grandfather Gustav Hensel invented and developed the first plastic junction box. In contrast to the cast iron and sheet metal boxes commonly used at the time, this made the distribution of electricity safer (insulation) and cheaper. The product revolutionised the everyday work of an entire generation of electricians, which is why it is still legendary today as the „HENSEL box“.

Now comes the next step: the market launch of the smallest HENSEL box. Many individual discussions with you have shown that a more compact design is often sufficient for simple installations. The new DK 0100 still offers sufficient space for wiring and integrates all the advantages of the proven DK series. It is the new entry into the range. Slightly smaller than the well-known DK 0200, with an attractive price.

As always, the same applies here: See for yourself. The box is available now!

Yours, 

Philipp C. Hensel, Managing Director,
Gustav Hensel GmbH & Co. KG



THE NEW DK 0100

For many simple electrical installations, a smaller junction box is completely sufficient.

This is where the new smallest in the DK series is just right. With the usual HENSEL Made in Germany quality, the new DK 0100 is the compact entry into the HENSEL world. As the smallest standard cable

junction box from HENSEL, it is suitable for most installations up to a maximum of 2.5 mm² indoors or protected outdoors. With all the advantages of HENSEL cable junction boxes - for simple, fast and safe installation in industrial and commercial applications, even in harsh environmental conditions.

OUR SOLUTION

The compact entry into the HENSEL world.

With all the advantages of the HENSEL Cable Junction Boxes

THE NEW DK 0100: THE COMPACT ENTRY INTO THE HENSEL WORLD. WITH ALL THE ADVANTAGES OF THE HENSEL CABLE JUNCTION BOXES.

A smaller cable junction box is big enough?

Then the new smallest of the DK family will make a big impression. In the usual HENSEL quality, the DK 0100 always distributes power safely and reliably. Made for installations up to a maximum of 2.5 mm² in industry and commerce, but also in other areas with increased mechanical requirements or special demands on dust and moisture protection, as well as for increased quality requirements of the customer.

WELL-KNOWN HENSEL PREMIUM QUALITY IN SMALL FORMAT

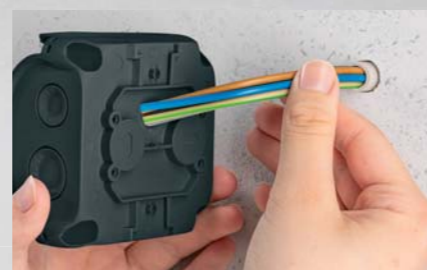
- + Protection class: IP 66
- + Flexible mounting options
- + With more space for wiring
- + Dimensions 84 x 84 x 55 mm
- + with or without plug-in terminals
 - 5 x WAGO 221-413, 3-conductor
 - Compact connection terminal
- + Colour: grey or black
- + Impact resistance IK 07



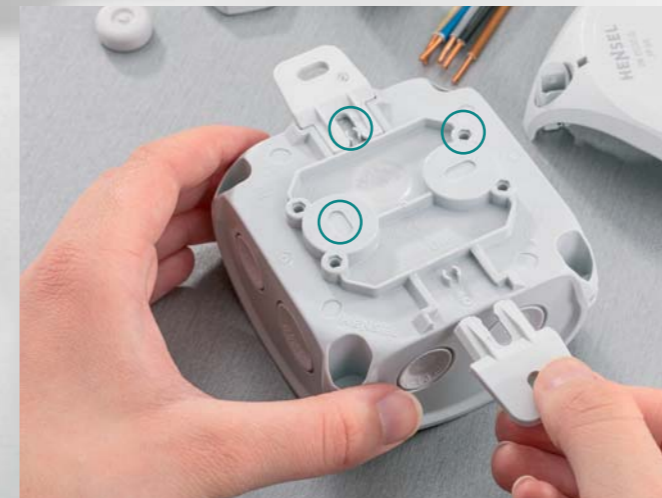
VARIABLE CABLE ENTRY – THROUGH AND TIGHT

As usual with HENSEL cable junction boxes:

- + Cable entry via integrated elastic sealing diaphragms
- + Elastic membrane, which can be removed for cable entry via cable glands (M20 and M16)
- + 4 membranes (sealing range 6-15 mm) for the use of M20 cable glands, 3 membranes (sealing range 6-13 mm) for the use of M16 cable glands
- + Cable entry through the bottom of the box via integrated elastic membrane



FLEXIBLE FASTENING – EQUIPPED FOR EVERY REQUIREMENT



- + Simple installation thanks to the enclosed outer for plugging in. Slotted holes for perfect alignment. Easy marking thanks to optimum accessibility.
- + Internal fastening option
- + Fastening via the back



DETAILED PRODUCT INFORMATION – DESIGNED WITH DAILY WORK IN MIND

- + Quick to close with a quarter turn, easily recognisable locking position
- + Without metal screws, non-rusting and durable
- + Sealable without accessories
- + Burning behaviour: Glow wiretest in accordance with IEC 60695-2-11: up to 960 °C, flame retardant, self-extinguishing
- + Material: polypropylene



OUR SOLUTION

Renowned HENSEL quality Made in Germany in a small format

THE NEW ENYCASE DK 0100

DK CABLE JUNCTION BOXES – for normal environment and protected outdoor



DK 0100 G | DK 0100 B
 without terminals
 + dimensions H x W x D: 84 x 84 x 55 mm
 + with integrated elastic membranes, which can be removed for cable entry via cable glands, sealing range Ø 6.0-15.0 mm
 + lid fasteners sealable without accessories
 + external brackets for wall fixing included

rated insulation voltage	U _i = 1000 V a.c./d.c.
material	PP (polypropylene)



DK 0102 W | DK 0102 X
 0.75-2.5 mm², Cu 3~
 + dimensions H x W x D: 84 x 84 x 55 mm
 + with 5 x Wago 221-413 3-conductor compact terminal
 + per compact terminal 3 x 0.14-4mm² f, 3 x 0.2-4 mm² r
 + with integrated elastic membranes, which can be removed for cable entry via cable glands, sealing range Ø 6.0-15.0 mm
 + lid fasteners sealable without accessories
 + external brackets for wall fixing included

rated insulation voltage	U _i = 450 V a.c./d.c.
rated current	32 A
material	PP (polypropylene)

THE RIGHT BOX FOR EVERY APPLICATION

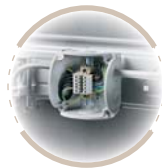
In dry, damp, wet or even fire-prone areas –

Cable junction boxes from HENSEL distribute electricity for all areas of application always safe and reliable.



DK Series:
IP 66

for harsh environmental conditions, with and without terminals, elastic membranes or metric knockouts



RK Series:
IP 66

with terminal blocks, elastic membranes



KF Series:
IP 66 / IP 67 / IP 69

weatherproof, for unprotected outdoor installation, with and without terminals, metric knockouts



WP Series:
IP 66 / IP 68 / IP 69

submersion up to 20 meters, 168 hours waterproof, encapsulating for extreme applications with terminals, metric knockouts



KX Series:
IP 66

for use in potentially explosive atmospheres suitable for Ex zone 2 and 22, with terminals



FK Series:
IP 66

E30/E60/E90 intrinsic fire resistance
PH120 insulation integrity with terminals

HENSEL

HENSEL ELECTRIC UK LTD.
 Ground Floor
 Unit 5
 Anglo Office Park
 Lincoln Road
 High Wycombe
 HP12 3FU
 United Kingdom
 Tel.: +44 (0)3450 66 00 55
 sales@hensel-electric.co.uk



CONFIGURE YOUR INDIVIDUAL BOX!

HN MY BOX
 Your logo in colour on the Hensel box