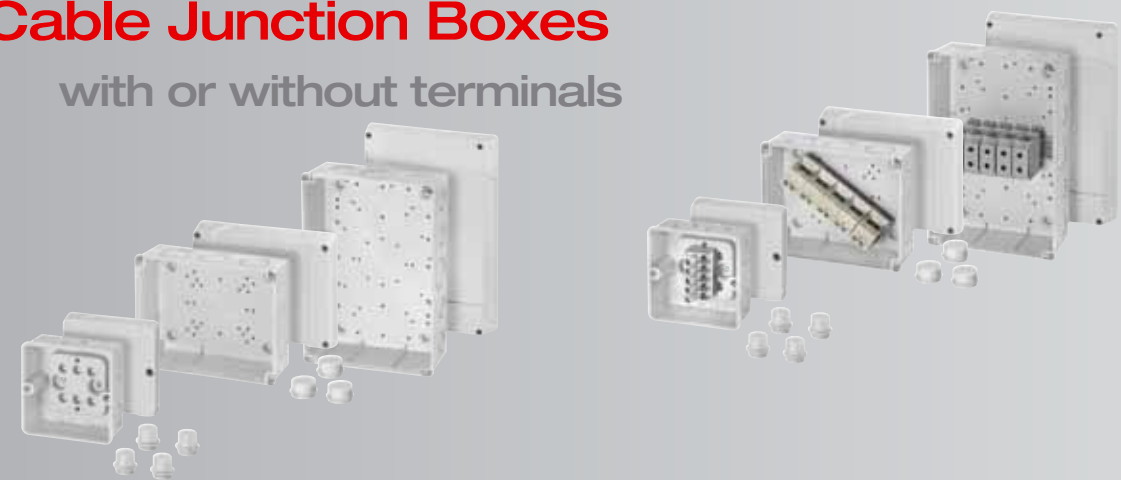


Cable Junction Boxes

with or without terminals



Cable Junction Boxes with terminals for Aluminium & Copper conductors

Boxes with Terminals for Aluminium and Copper Conductors



Cable Junction Boxes with elastic membranes

in the Bottom

insert the conductor and it's done



The Company

Hensel Electric India Pvt Ltd

Industrial Electrical Power Distribution Systems

35 Kunnam Village, Sunguvarchathram Walajabad Road
Sriperumbudur - 631 604
Kanchipuram Dist., Tamil Nadu
INDIA

Phone: +91-44-3727 0202
Fax: +91-44-3727 0200
E-Mail: info@hensel-electric.in
www.hensel.in



Headquarters in Germany

Representations abroad

Africa

Angola
Egypt
Mozambique
South Africa

America

USA

Asia

Bangladesh
Bhutan
Cambodia
China
Georgia
India
Indonesia
Kazakhstan
Malaysia
Maldives
Myanmar
Pakistan
Philippines
Singapore
Sri Lanka
Taiwan
Thailand

Europe

Austria
Belgium
Bulgaria
Croatia
Czech Republic
Denmark
Estonia
Finland

France

Great Britain
Hungary
Iceland
Ireland
Israel

Italy

Latvia

Lithuania

Luxembourg
Montenegro
Netherlands

Norway

Poland

Portugal

Romania

Russia

Serbia

Slovakia

Spain

Sweden

Switzerland

Turkey

Ukraine

Middle East

United Arab Emirates
Bahrain

Iran

Kuwait

Oman

Qatar

Saudi Arabia

Oceania

Australia

New Zealand

Subsidiaries abroad

Czech Republic

Hensel s.r.o.
www.hensel.cz

Hungary

Hensel Hungaria Villamosági
Kft, www.hensel.hu

Poland

Hensel Polska Sp. z o. o.
www.hensel.com.pl

Russia

OOO Hensel + Mennekes Elektro
www.hensel-mennekes.ru
www.hensel-electric.ru

India

Hensel Electric India Pvt. Ltd
www.hensel-electric.in

Turkey

Hensel Electric Turkey Ltd.
www.hensel-electric.com.tr

People's Republic of China

Hensel (Qingdao)
Electrical Installation and Distribution Systems Co. Ltd
www.hensel-electric.cn



www.hensel.in
09.2014

Info The addresses of our international subsidiaries and sales partners are on the Internet at www.hensel-electric.de -> Contact



Small box, great impact!

DK Cable Junction Boxes



ENYCASE®

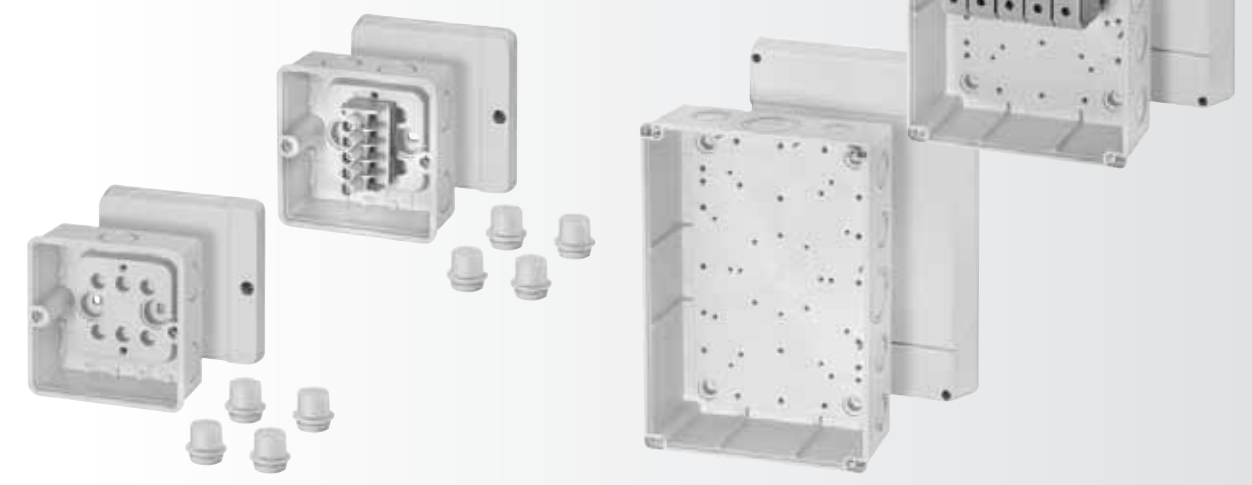
DK Cable Junction Boxes

- from 1.5 up to 240 mm²
- Degree of protection IP 54 - 67
- DK Cable junction boxes are VDE tested in accordance with IEC 60670-22



ENYCASE®

Cable Junction Boxes
with or without terminals



Modern terminals
variable terminal mounting positions



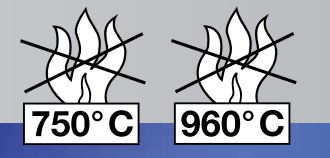
- Variable terminal mounting positions (5 positions) and new terminal technology

Cable entry
with or without terminals



- Included accessories as listed: grommets ESM = IP 55
- Hensel cable junction boxes can in general also be used in poor environmental conditions by using IP 65 cable glands AKM/ASM.

High quality material
for demanding areas of application



- Stainless steel cover screws with quick fastening metric thread. Reducing cover fixing time.



- Flame-retardant, self-extinguishing
Burning behaviour: Glow wire test according to IEC 60 695-2-11

Labeling system
for circuit discription

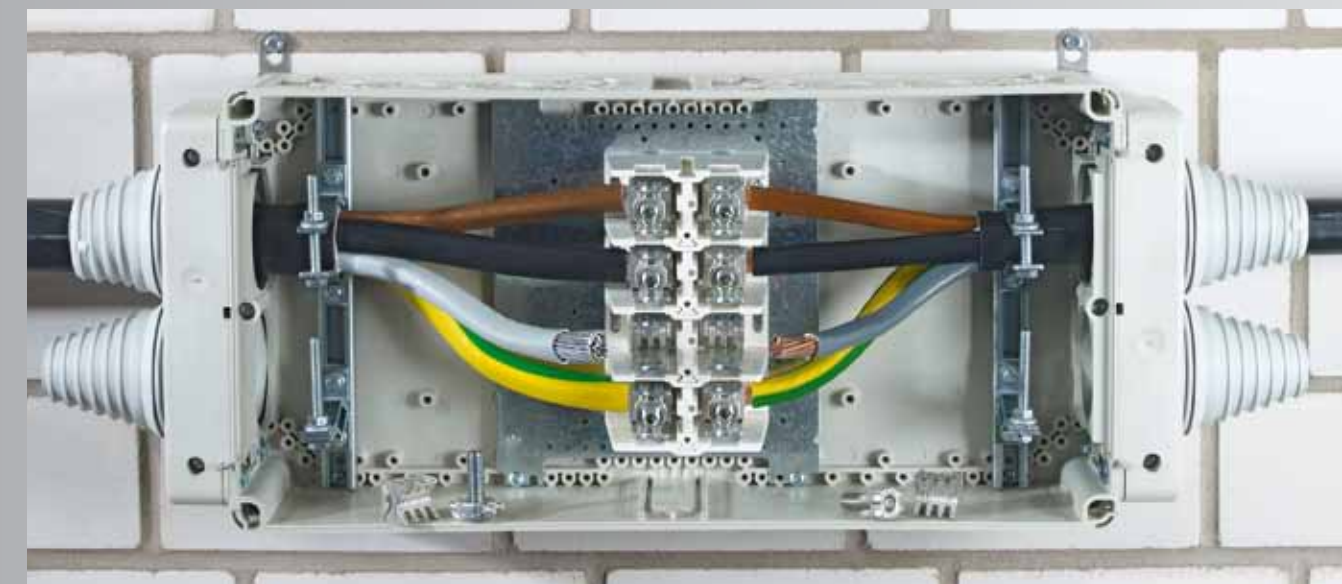


- Label template on the Internet at www.hensel-electric.de - in the 'Downloads' area.

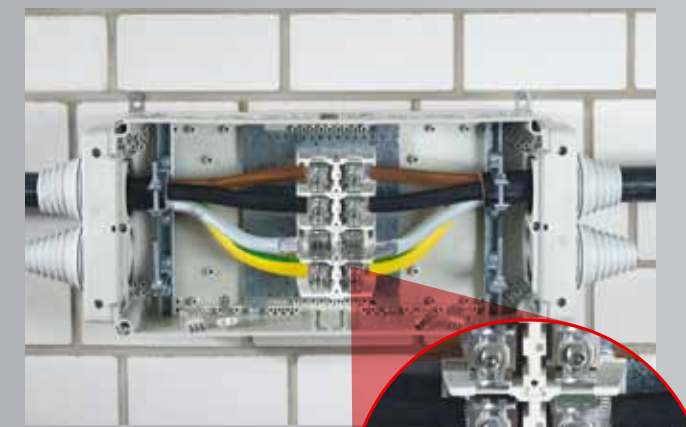


Aluminium & Copper
Boxes with Terminals for Aluminium and Copper Conductors

Cable junction boxes for aluminium cables from Hensel can connect the various conductor cross sections and conductor types from aluminium and copper in a single terminal.

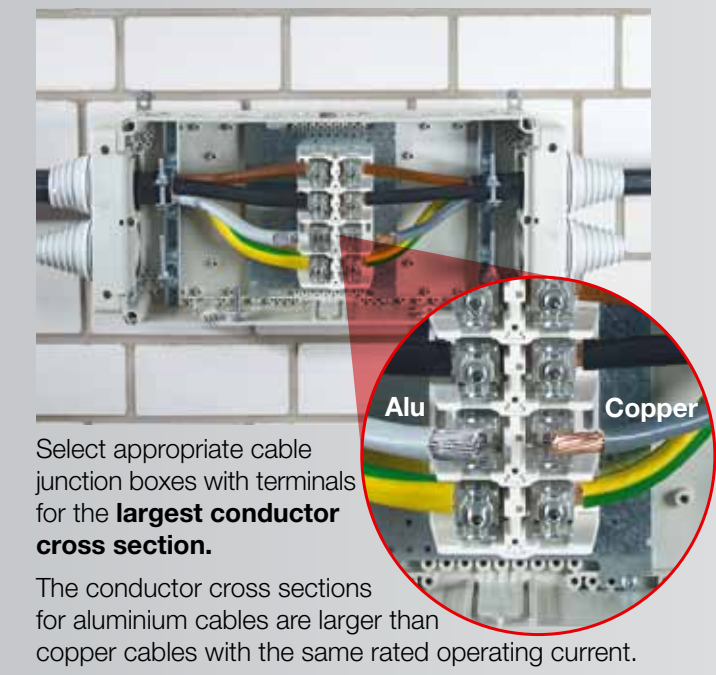


Connection of two aluminium conductors



Select appropriate cable junction boxes with terminals for the aluminium conductor cross section.
The box size selected in such a manner should offer enough space for wiring.

Connection of aluminium and copper conductors



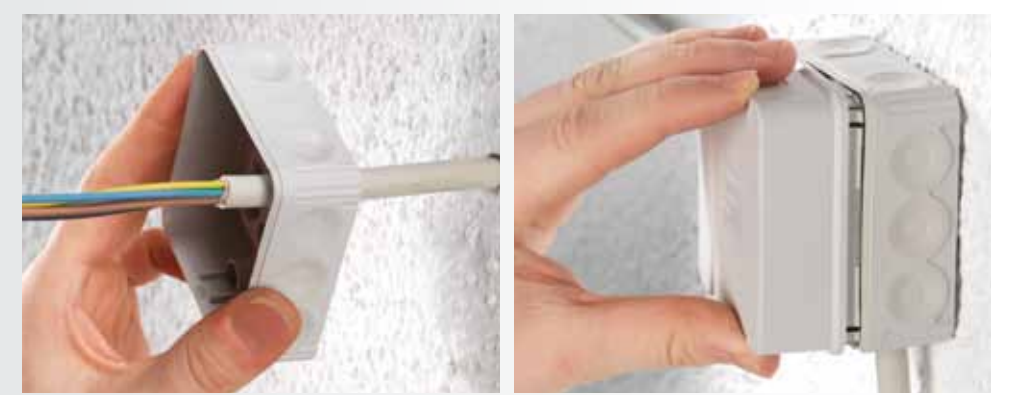
Select appropriate cable junction boxes with terminals for the **largest conductor cross section**.
The conductor cross sections for aluminium cables are larger than copper cables with the same rated operating current.

Elastic Membranes
insert the conductor and it's done



- No punching tool required - insert the conductor and it's done
- Degree of protection IP 55
- Grommet supplied for sealing membranes in case of modifications.
- Box wall with 3 cable entries

Elastic Membranes
in the Bottom



- Cable entry from the rear via elastic membranes in the bottom
- Lid for clip-on attachment. Reducing cover fixing time